

History

The establishment of the **School of Pedagogical & Technological Education (ASPETE)** in 2002 (article 4, Law 3027/2002 as amended by the Presidential Decree 101/2013 and article 29, Law 4186/2013) was paved by the vision and mission of **SELETE**, a Technical & Vocational Teacher Training Institute, founded in 1959 (Law 3971/1959). When SELETE was first founded, the prevailing trend for the education and training of Technical and Vocational Teachers was that of the "add on" approach. That is, the focus was primarily on pedagogical training and only a small component of the curriculum pertained to technical or vocational subjects. Later, in the seventies, a parallel approach was adopted, that urged integrating pedagogical training with technical and vocational training. This new approach led to the establishment of two separate Schools under SELETE:

- The Pedagogical Technical School (PATES), which maintained the tradition of the "add on" pedagogical approach
- The Higher School of Pedagogical & Technical Education (ASETEM), which adopted the parallel approach at the level of Tertiary Education



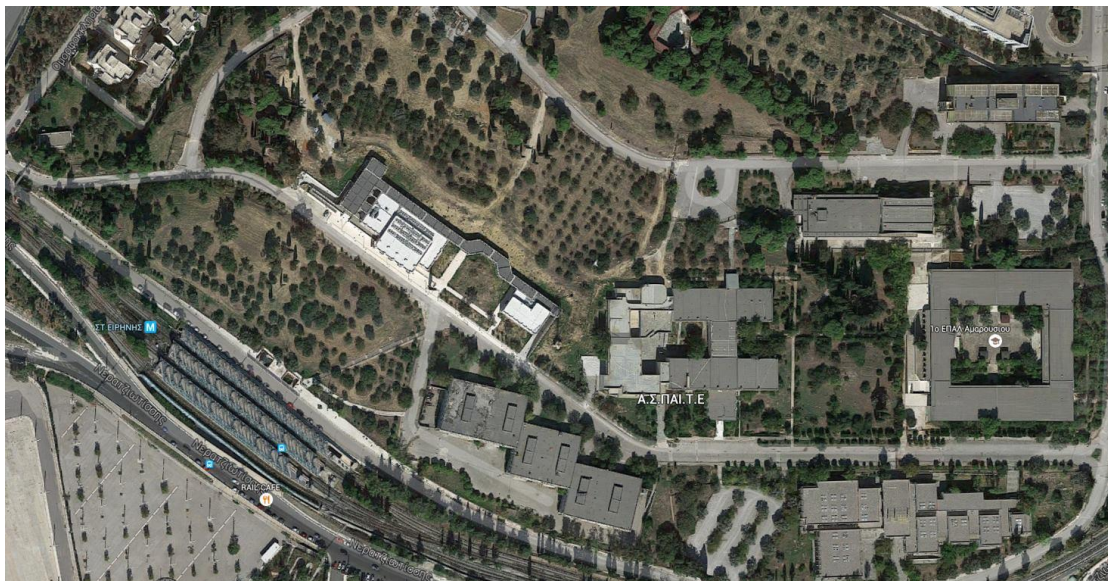
Aerial Photography of SELETE

SELETE continued to function with this structure until the end of the academic year 2001-2002, when it was nullified in favour of the establishment of an upgraded new School, officially named **School of Pedagogical & Technological Education (ASPETE)**.

ASPETE provides concurrent technological and pedagogical education and training at tertiary level. Its mission includes the promotion of applied research in educational technology and pedagogy, as well as the provision of training, further training or specialization for in-service or prospective secondary teachers.

Nurtured with great expectations in relation to the teaching profession, ASPETE aims at ensuring and promoting excellence in all of the programmes offered by its academic departments. These include 1st cycle undergraduate study-programmes in four major disciplines, postgraduate 2nd cycle degrees (MA/MSc) promoting research in the relevant subject areas, and programmes of pedagogical training, further training or specialization. To this end, ASPETE is committed to policies and standards that define best practices and encourage transnational cooperation.

ASPETE is situated in Athens in a campus encompassing approximately 200 acres, but it also organizes and operates programmes of pedagogical training, further training or specialization in a number of other cities across the country (Thessaloniki, Patras, Ioannina, Volos, Heraklion Crete, Sapes, Kozani/Western Macedonia, Mytilene/Northern Aegean, Rhodes/Southern Aegean, Argos/Peloponnese and Livadia/Stereia Ellada).



Aerial Photography of ASPETE's Campus in Athens